

Spark Violet™ 538 anti-human CD8a Antibody

Catalog# / Size	388811 / 25 tests 388812 / 100 tests
Clone	S21010F
Regulatory Status	RUO
Other Names	T8, Leu2, CD8 Antigen
Isotype	Mouse IgG2b, κ
Description	CD8α, also known as T8 or Leu2, is a 32-34 kD type 1 transmembrane glycoprotein part of the immunoglobulin superfamily. CD8α is expressed on cytotoxic T cells, NK Cells, as well as a majority of thymocytes. CD8α can form a homodimer (CD8α/α) or heterodimer (CD8α/β) with CD8β. CD8α acts as a co-receptor with MHC class I-restricted T cell receptors in antigen recognition and T cell activation, and has been shown to play a role in thymic differentiation. Two domains in CD8α are important for function: the extracellular Ig superfamily domain binds the α3 domain of MHC Class I and the cytoplasmic CXCP motif binds the tyrosine kinase p56 Lck.

Product Details

Verified Reactivity	Human
Antibody Type	Monoclonal
Host Species	Mouse
Immunogen	Human CD8α-transfected cells
Formulation	Phosphate-buffered solution, pH 7.2, containing 0.09% sodium azide and BSA (origin USA)
Preparation	The antibody was purified by affinity chromatography and conjugated with Spark Violet™ 538 under optimal conditions.
Concentration	Lot-specific (to obtain lot-specific concentration and expiration, please enter the lot number in our Certificate of Analysis online tool.)
Storage & Handling	The antibody solution should be stored undiluted between 2°C and 8°C, and protected from prolonged exposure to light. Do not freeze.
Application	FC - Quality tested
Recommended Usage	Each lot of this antibody is quality control tested by immunofluorescent staining with flow cytometric analysis . For flow cytometric staining, the suggested use of this reagent is 5 µL per million cells in 100 µL staining volume or 5 µL per 100 µL of whole blood. It is recommended that the reagent be titrated for optimal performance for each application. * Spark Violet™ 538 has a maximum excitation of 396 nm and a maximum emission of 538 nm.
Excitation Laser	Violet Laser (405 nm)
Application Notes	Clone S21010F can completely block the binding of clone HIT8a, clone RPA-T8, and clone SK1 on target cells and can be blocked by HIT8a and SK1. Clone S21010F does not interfere with the binding of anti-human CD8β antibodies S21011A or QA20A40. Clone S21010F shows comparable staining signals on 4% paraformaldehyde-fixed cells and unfixed cells.
RRID	AB_3683436 (BioLegend Cat. No. 388811) AB_3683436 (BioLegend Cat. No. 388812)

Antigen Details

Structure	Ig superfamily
Distribution	Subset of T Cells, most thymocytes, NK cells
Function	TCR co-receptor
Interaction	CD8 β
Ligand/Receptor	MHC Class I molecules
Cell Type	NK cells, T cells, Thymocytes
Biology Area	Immunology
Molecular Family	CD Molecules

Antigen References

1. Barclay N, *et al.* 1993. The Leucocyte Antigen FactsBook. Academic Press Inc. San Diego.
2. Leahy, D.J, 1995. *FASEB J.* 9:17-25.

Gene ID [925](#)

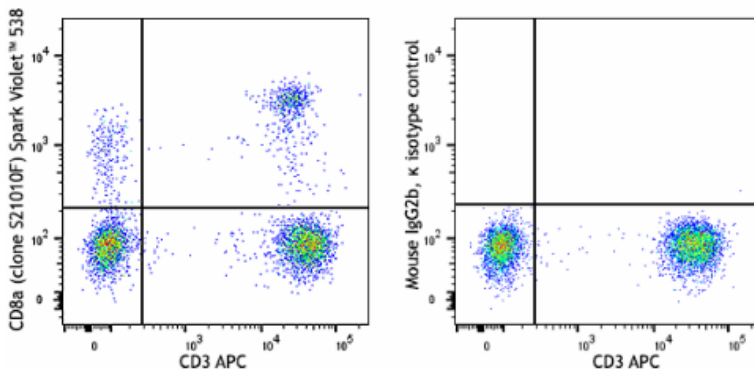
Related Protocols

- [Cell Surface Flow Cytometry Staining Protocol](#)

Other Formats

Purified anti-human CD8a, PE anti-human CD8a, Spark Red™ 718 anti-human CD8a, FITC anti-human CD8a Antibody, Alexa Fluor® 700 anti-human CD8a Antibody, PE/Dazzle™ 594 anti-human CD8a Antibody, PE/Cyanine7 anti-human CD8a Antibody, Spark Violet™ 538 anti-human CD8a Antibody

Product Data



Human peripheral blood lymphocytes were stained with anti-human CD3 (clone UCHT1) APC and anti-human CD8a (clone S21010F) Spark Violet™ 538 (left) or mouse IgG2b, κ Spark Violet™ 538 isotype control (right)

For Research Use Only. Not for diagnostic or therapeutic use.

This product is supplied subject to the terms and conditions, including the limited license, located at www.biolegend.com/terms ("Terms") and may be used only as provided in the Terms. Without limiting the foregoing, BioLegend products may not be used for any Commercial Purpose as defined in the Terms, resold in any form, used in manufacturing, or reverse engineered, sequenced, or otherwise studied or used to learn its design or composition without express written approval of BioLegend. Regardless of the information given in this document, user is solely responsible for determining any license requirements necessary for user's intended use and assumes all risk and liability arising from use of the product. BioLegend is not responsible for patent infringement or any other risks or liabilities whatsoever resulting from the use of its products.

BioLegend, the BioLegend logo, and all other trademarks are property of BioLegend, Inc. or their respective owners, and all rights are reserved.

8999 BioLegend Way, San Diego, CA 92121 www.biolegend.com
Toll-Free Phone: 1-877-Bio-Legend (246-5343) Phone: (858) 768-5800 Fax: (877) 455-9587