

Siglec-G (clone SH1) Spark YG™ Antibody

Catalog# / Size	163311 / 25 µg 163312 / 100 µg
Clone	SH1
Regulatory Status	RUO
Other Names	Siglec10, Sialic acid-binding Ig-like lectin G
Isotype	Mouse IgG1, κ
Description	Siglec-G is a member of the CD33-related Siglec (sialic acid-binding, immunoglobulin-like lectin) family. Siglec-G is the orthologue of human Siglec-10. It is a 110-120 kDa, 688 amino acid type I transmembrane protein and contains five extracellular immunoglobulin domains and an intracellular region with three conserved tyrosine-based motifs. It is an inhibitory receptor that is expressed in a B cell-restricted way, with particularly high expression in Pre-B and B1a cells. Upon stimulation with an antigen, Siglec-G is recruited to IgM, which is further phosphorylated inhibiting IgM-induced Ca ²⁺ signaling and NFATc1 expression.

Product Details

Verified Reactivity	Mouse
Antibody Type	Monoclonal
Host Species	Mouse
Formulation	Phosphate-buffered solution, pH 7.2, containing 0.09% sodium azide
Preparation	The antibody was purified by affinity chromatography and conjugated with Spark YG™ 581 under optimal conditions.
Concentration	0.5 mg/mL
Storage & Handling	The antibody solution should be stored undiluted between 2°C and 8°C, and protected from prolonged exposure to light. Do not freeze.
Application	FC - Quality tested
Recommended Usage	Each lot of this antibody is quality control tested by immunofluorescent staining with flow cytometric analysis . For flow cytometric staining, the suggested use of this reagent is ≤ 0.5 µg per million cells in 100 µL volume. It is recommended that the reagent be titrated for optimal performance for each application. * Spark YG™ 581 has a maximum excitation of 562 nm and a maximum emission of 581 nm.
Excitation Laser	Green Laser (532 nm)/Yellow-Green Laser (561 nm)
RRID	AB_3698926 (BioLegend Cat. No. 163311) AB_3698926 (BioLegend Cat. No. 163312)

Antigen Details

Structure	Type I transmembrane protein that contains five extracellular immunoglobulin domains and an intracellular region with three conserved tyrosine-based motifs.
Distribution	B cells
Function	Inhibits IgM-induced Ca ²⁺ signaling and NFATc1 expression
Ligand/Receptor	Lectin

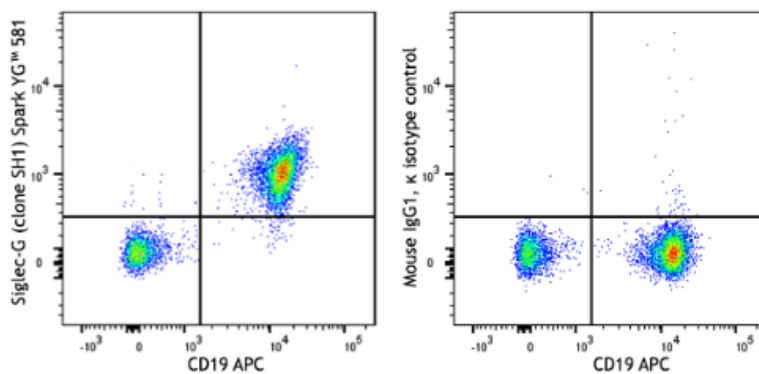
Related Protocols

- [Cell Surface Flow Cytometry Staining Protocol](#)

Other Formats

Purified anti-mouse Siglec-G Antibody, PE anti-mouse Siglec-G, Alexa Fluor® 647 anti-mouse Siglec-G, Spark UV™ 387 anti-mouse Siglec-G, Brilliant Violet 421™ anti-mouse Siglec-G, Siglec-G (clone SH1) Spark YG™ Antibody, Spark Red™ 718 anti-mouse Siglec-G Antibody, Brilliant Violet 750™ anti-mouse Siglec-G, Brilliant Violet 605™ anti-mouse Siglec-G Antibody, Brilliant Violet 650™ anti-mouse Siglec-G Antibody, Brilliant Violet 785™ anti-mouse Siglec-G Antibody, Brilliant Violet 510™ anti-mouse Siglec-G Antibody

Product Data



C57BL/6 mouse splenocytes were stained with anti-mouse CD19 (clone 6D5) APC and anti-mouse Siglec-G (clone SH1) Spark YG™ 581 (left) or mouse IgG1, κ Spark YG™ 581 isotype control (right).

For Research Use Only. Not for diagnostic or therapeutic use.

This product is supplied subject to the terms and conditions, including the limited license, located at www.biolegend.com/terms ("Terms") and may be used only as provided in the Terms. Without limiting the foregoing, BioLegend products may not be used for any Commercial Purpose as defined in the Terms, resold in any form, used in manufacturing, or reverse engineered, sequenced, or otherwise studied or used to learn its design or composition without express written approval of BioLegend. Regardless of the information given in this document, user is solely responsible for determining any license requirements necessary for user's intended use and assumes all risk and liability arising from use of the product. BioLegend is not responsible for patent infringement or any other risks or liabilities whatsoever resulting from the use of its products.

BioLegend, the BioLegend logo, and all other trademarks are property of BioLegend, Inc. or their respective owners, and all rights are reserved.

8999 BioLegend Way, San Diego, CA 92121 www.biolegend.com
Toll-Free Phone: 1-877-Bio-Legend (246-5343) Phone: (858) 768-5800 Fax: (877) 455-9587